

Compact electromagnetic anechoic box for production lines such as radio equipment, terminal and module.

It is just the size that fits the A4 size product.

Support a wide range of applications and reduce equipment costs.



Specifications

Outside dimensions	approx. 470(W)mm×470(D)mm×520(H)mm
Inside dimensions	approx. 400(W)mm×400(D)mm×400(H)mm (excluding projections)
Weight	approx. 20kg
Structure	Double structures with radio wave absorber and aluminum plate
Shielding characteristics	70dB typ @ 2.4GHz
Radio wave absorber	MYA-75 (thickness approx. 3cm)
Reflection loss	more than 20dB (MYA-75 : more than 2.4GHz)
Connectors	SMA(J)×4 @ back I/F module installation opening (with detachable panel)

Features



■ One touch lock mechanism

The shield effect is maintained despite simple opening and closing motion, and the burden on the operator will be also reduced.



■ Safety against overturning

It can be fixed to the working desk or shelf because integrated with the pedestal.



■ Support to customization

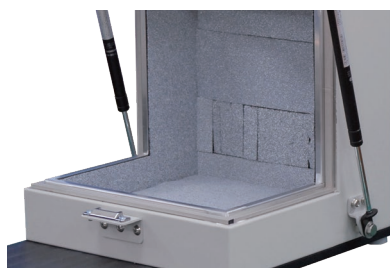
Based on actual operating conditions, the various customizations will be supported. Need extra cost.

Option

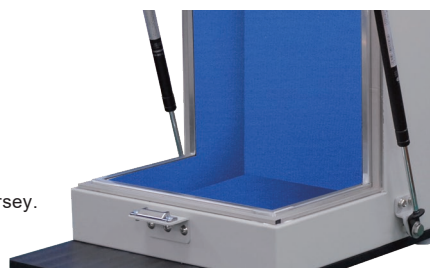
I/F module	I/F module is equipped with AC power supply, DC power supply, LAN,USB, SMA, BNC, N, Triaxial, D-sub connectors and Through pipe. The I/F module can be easily replaced if needed.
------------	---

Model	Equipped connectors
IFM1	AC(1pc), LAN(1pc), USB(1pc), D-sub9pin(1pc)
IFM2	AC(1pc), LAN(2pcs), USB(2pcs), D-sub9pin(1pc)
IFM3	AC(1pc), LAN(2pcs), USB(2pcs), D-sub25pin(1pc)
IFM4	DC(1pc), LAN(1pc), USB(1pc), D-sub9pin(1pc), D-sub25pin(1pc)
IFM5	SMA(2pcs), BNC(2pcs), N(2pcs), Triaxial(2pcs)
IFM6	Through pipe (2 kinds are selectable.) ※ Inner diameter is different depending on the frequency band.

Surface treatment of radio wave absorber	This prevents fragment of radio wave absorber from adhering to products.
--	--



Cover the surface with blue jersey.

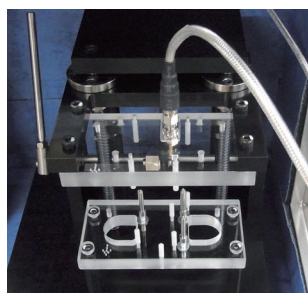
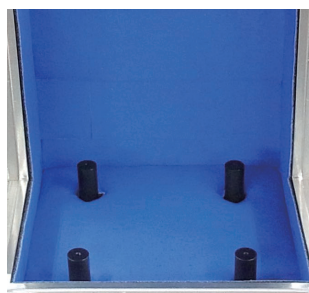


This is just a sample image.

Customize

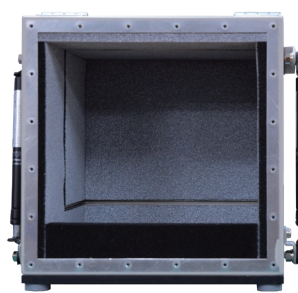
■ Installing a jig

The specified jig is fixed in the anechoic box after processing the main body. (Only when shipping)



■ Modification of rear part

If the antenna or connector position is changed in the future, the desired panel can be installed after removing the rear panel.



< The panel is removed >



< After installing panel >

This is just a sample image.

※MICRONIX Corporation reserves the right to make changes in design, specification and other information without prior notice.

MICRONIX

MICRONIX CORPORATION

2987-2, KOBIKI-CHO, HACHIOJI-SHI, TOKYO 193-0934 JAPAN

TEL : +81-42-637-3667 FAX : +81-42-637-0227

URL : <https://micronix-jp.com/> E-mail : micronix_e@micronix-jp.com

AGENCY

CJ2307E