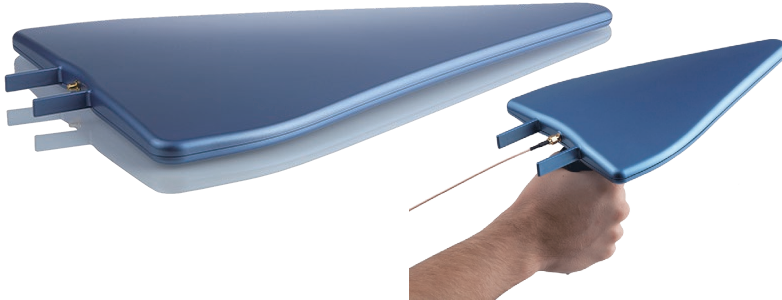
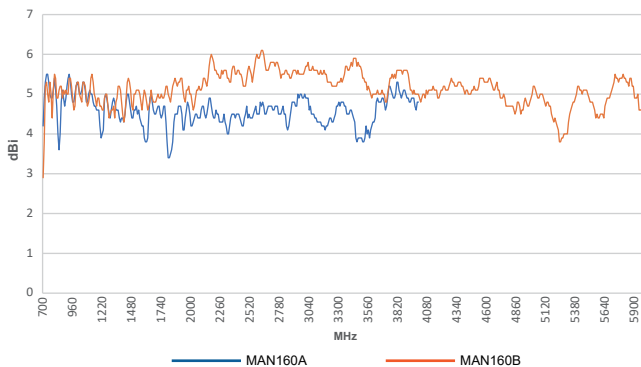


**Suitable for direction finding of radio emission sources in site survey and simple measurement of RF emission immunity**

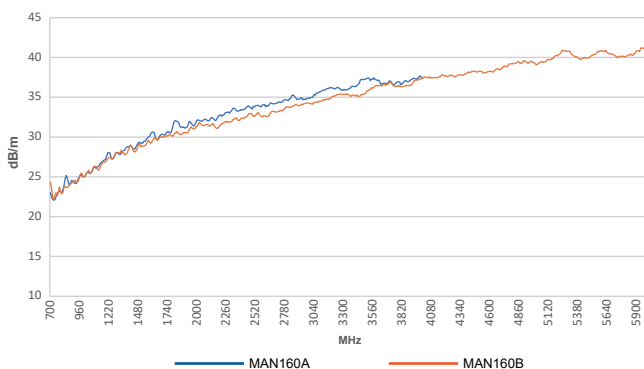


Wideband, lightweight and inexpensive log-periodic antenna. It is suitable for combination with our handy spectrum analyzer. Also, by performing antenna gain correction within our spectrum analyzer, the value converted to electric field strength (dB $\mu$ V/m) can be read directly.

**Antenna gain (Typical)**



**Antenna factor (Typical)**



**Specification**

Model	MAN160A	MAN160B
Frequency range	700MHz to 4GHz	700MHz to 6GHz
Maximum power	100W (At CW and 400MHz )	
Impedance	50 $\Omega$ (nominal)	
VSWR	< 2.0 (Typical)	
Gain	4dBi (Typical)	5dBi (Typical)
Antenna factor	23 to 38dB/m	26 to 41dB/m
Connector	SMA(J)	
Dimensions	340(L)x200(W)x25(D)mm	
Weight	270g	250g

**Components**

- Antenna body
- Grip
- Antenna data
- Hard case



\*Coaxial cable and CD-ROM in the photo are not included.

\*MICRONIX Corporation reserves the right to make a change in design, specification and other information without prior notice.