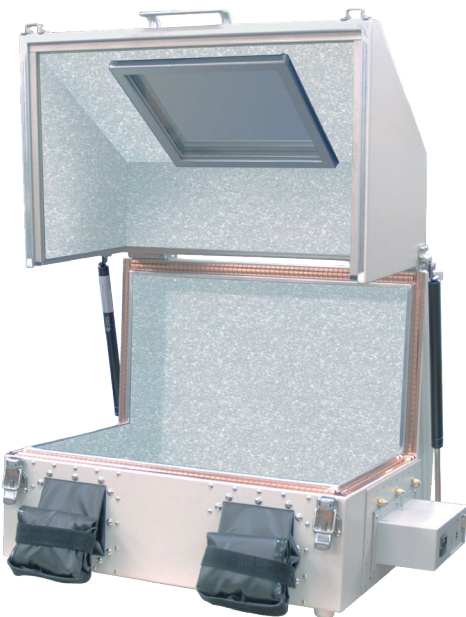
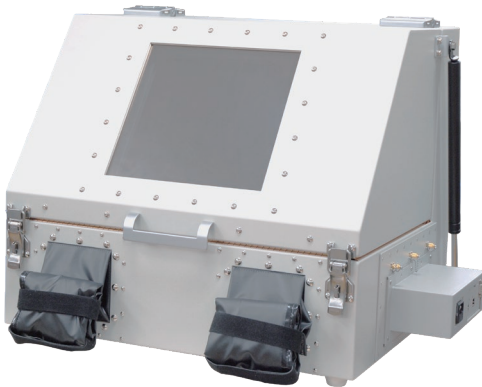


Suitable for weak electric field resistance test, out-of-service test or digital forensics for smart phone, tablet terminal or mobile PC ! !

DUT can be operated directly with bare hands while placing it in the box and looking at the inside from the shield window.



Features

- DUT can be operated with bare hands.
- Providing wide viewing angle using large shield window
- Optional I/F modules from IFM1 to IFM6 correspond to the various interfaces.

Specifications

Outside Dimensions	615(W)×515(H)×518(D)mm(excluding projections)
Inside Dimensions	550(W)×450(H)×450(D)mm
Weight	approx. 21kg(excluding I/F module)
Structure	Double structures with radio wave absorber and aluminum plate.
Shielding Characteristics(typ)	more than 60dB(600MHz to 6GHz)
Reflection loss	more than 20dB (≥2.4GHz)
Shield window	approx. 275(W)×255(D)mm
Connectors	SMA 6pcs (Both sides each 3pcs)
Option	I/F Module (1 unit on each side can be installed. IFM1 to IFM6) Conduction arm supporter MY3700-002 LED light MY3700-102 (2 can be attached, battery drive, factory option with mounting bracket)

I/F module

I/F module is equipped with AC power supply, DC power supply, LAN, USB, SMA, BNC, N, Triaxial, D-sub connectors and Through pipe.
The I/F module can be easily replaced if needed.

Model	Equipped connectors
IFM1	AC(1pc), LAN(1pc), USB(1pc), D-sub9pin(1pc)
IFM2	AC(1pc), LAN(2pcs), USB(2pcs), D-sub9pin(1pc)
IFM3	AC(1pc), LAN(2pcs), USB(2pcs), D-sub25pin(1pc)
IFM4	DC(1pc), LAN(1pc), USB(1pc), D-sub9pin(1pc), D-sub25pin(1pc)
IFM5	SMA(2pcs), BNC(2pcs), N(2pcs), Triaxial(2pcs)
IFM6	Through pipe (2 kinds are selectable.) ※ Inner diameter is different depending on the frequency band.

*MICRONIX Corporation reserves the right to make change in design, specification and other information without prior notice.

MICRONIX
MICRONIX CORPORATION

2987-2, KOBIKI-CHO, HACHIOJI-SHI, TOKYO 193-0934 JAPAN

TEL : +81-42-637-3667 FAX : +81-42-637-0227

URL : <http://www.micronix-jp.com> E-mail : micronix_e@micronix-jp.com

AGENCY