

C & UCREATIVE
& UNIQUE**MICRONIX**

MICROWAVE

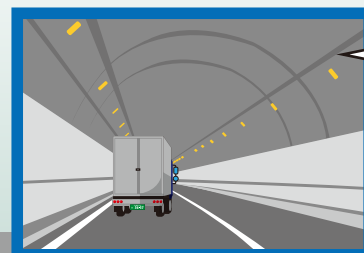
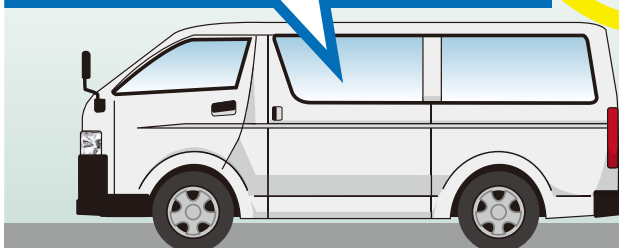
Multi-wave electric field strength
automatic measurement system**ME9500**

As the electric field strength such as AM radio, FM radio, business radio and VICS can be measured at high speed, it is the optimum system for investigation of radio wave service area and maintenance of retransmission system.



Features

- 1 Electric field strength such as AM radio, FM radio, business radio (police, firefighting, disaster prevention and etc.) and VICS can be measured automatically while installing in the car and running at high speed.
(It is possible to measure 14ch of AM radio, 14ch of FM radio and 1ch selected from business radio or VICS at a time. In 20m interval when traveling at 80km/h.)
- 2 During the measurement, it's possible to display a line graph of electric field strength in real time on the PC screen.
- 3 By linking with the Google map after measuring, the measured electric field strength can be displayed on the map. However, in case GPS option is installed.
- 4 As the handheld spectrum analyzer MSA500 series is used for electric field strength measurement, it can be used for application other than radio wave measurement.
(Maximum measuring frequency : 3.3GHz@MSA538, 8.5GHz@MSA558)

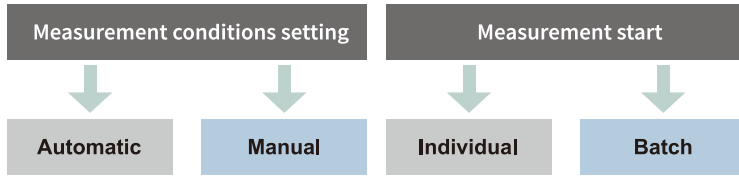


Electric field strength measurement of radio broadcasting and business radio

Software

Setting & measurement screen

- ① Select measurement conditions setting from automatic or manual.
- ② Start measurement with individual or batch start button.
- ③ Measurement result



■ Automatic

The optimum setting values for measuring 14ch of AM radio, 14ch of FM radio and 1ch selected from business radio or VICS are automatically set.

■ Manual

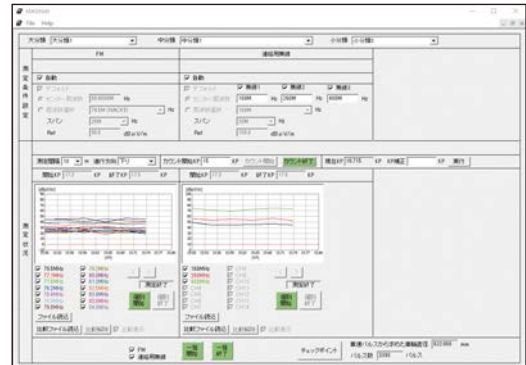
The setting of center frequency, frequency span and reference level can be freely performed.

■ Individual

1ch or multiple channels selected are measured individually.

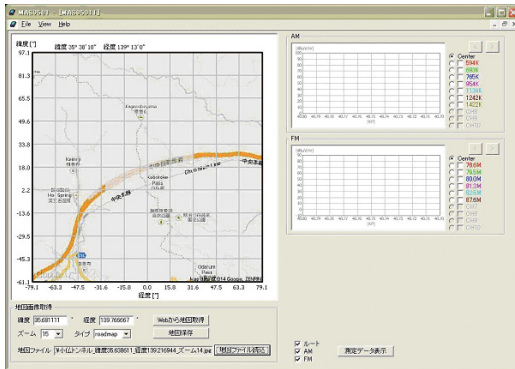
■ Batch

All of selected channels are measured at a time.



A line graph of electric field strength is displayed in real time.

Map display function (when GPS option is installed)



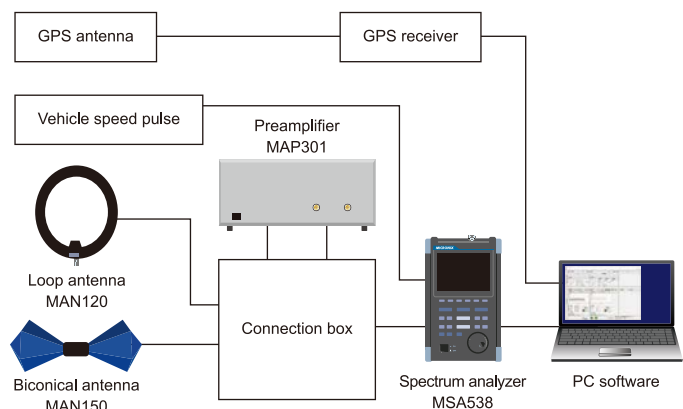
By linking measurement data with Google map, the electric field strength can be displayed on the map. Also, the travel distance is accurate as it is interpolated by the vehicle speed pulse. The color-coded point ● for each electric field strength is displayed on the map, so that you can see at a glance which wave of which route is strong or weak.

Example of system configuration

AM radio, FM radio, business radio and VICS measurements + map display function

Item	Model	Remarks
Spectrum analyzer	MSA538	3.3GHz max.
Lithium ion battery	MB400	
Loop antenna	MAN120	for AM radio
Biconical antenna	MAN150	
Connection box & cables		
Pre-amplifier	MAP301	for AM & FM radio
Automatic measurement & display software		
Map display function		GPS antenna, receiver and etc.

■ System conceptual diagram



※The PC is needed separately.

※System integration costs such as equipment, installation and maintenance are estimated separately.

※For system details and combinations, please contact our distributor or us directly.

※MICRONIX Corporation reserves the right to make change in design, specification and other information without prior notice.

MICRONIX

MICRONIX CORPORATION

2987-2, KOBIKI-CHO, HACHIOJI-SHI, TOKYO 193-0934 JAPAN

TEL: +81-42-637-3667 FAX: +81-42-637-0227

URL: <http://www.micronix-jp.com> E-mail: micronix_e@micronix-jp.com

AGENCY